

## *Water Valley Prom Dress Code*

- Dresses may be strapless (if they fit properly) or include spaghetti straps.
- Dresses may be backless, as long as they are not cut below the naval.
- 2-piece dresses **MUST** overlap at the waist: meaning top **MUST** overlap with skirt waistband.
- Midriffs will not be exposed. This includes both front and side. With arms down at your side, if flesh touches flesh, the dress is inappropriate.
- Dresses may not have a slit that exceeds mid-thigh. This is fingertip length.
- Dresses may not be cut below the bust line.
- Undergarments should not be visible. See-through apparel is not permitted in the front of the dress from the bust line to the mid-thigh with the exception of an appropriate open-back dress.
- Garments that are tight or low-cut are also unacceptable.
- No cover-ups (coats, shawls, sweaters) will be allowed over dresses that do not meet dress code.

Gentlemen, you are encouraged to wear formal attire. Formal prom attire may be classified as a tuxedo or dress suit, including a tie or bow tie, a dress shirt, which may include a vest or cummerbund, and dress shoes. No t-shirts or shorts allowed.

If you are bringing a date from another school, it is **YOUR RESPONSIBILITY** to make him/her aware of our dress code policy. Prom is a formal and special night for WV students. We hope to maintain the integrity and formality of this night by implementing this simple dress code.

If you have questions concerning your dress, it is your responsibility to seek prior approval from administration. For more information and pictures of appropriate and inappropriate dress, please see below.

SEE EXAMPLES ON THE FOLLOWING PAGES

Water Valley  
PROM DRESS CODE

# Why do we have a dress code?

WV staff and administration  
want you to make good choices.

We are not trying to inhibit your style. Prom  
should be fun, but we want everyone to be  
comfortable and safe.



# #1

Dresses may not be cut below the bust line. The bust continues around your sides directly under the armpit. With arms down at your side, if flesh touches flesh below the bust line, the dress is inappropriate.

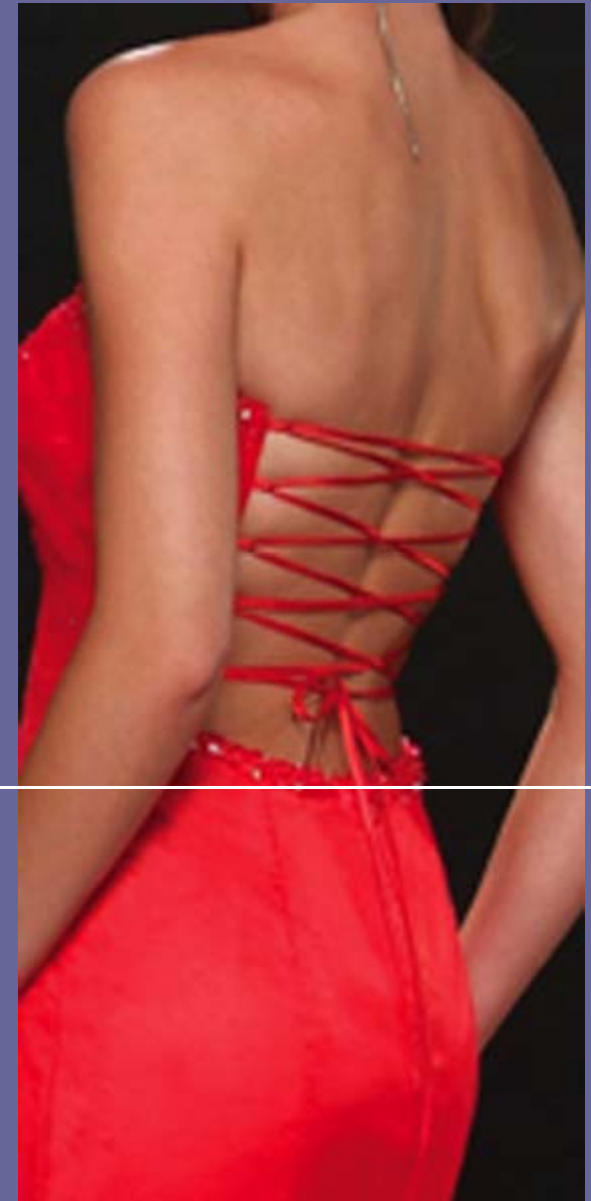


# UNACCEPTABLE DRESSES



## #2

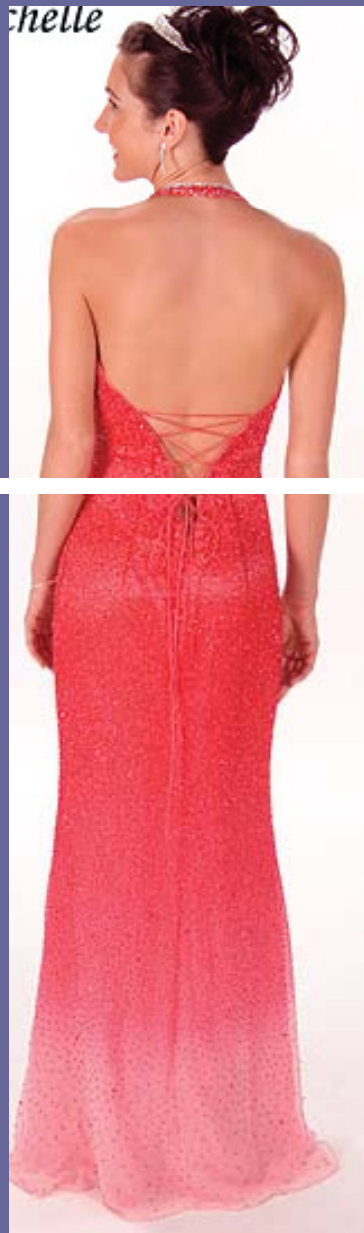
Dresses may be backless as long as they are not cut below the naval.



This dress meets dress code. Please notice how the bust is covered on the sides.



# UNACCEPTABLE DRESSES



# #3

Midriffs will not be exposed.

This includes both front and side.

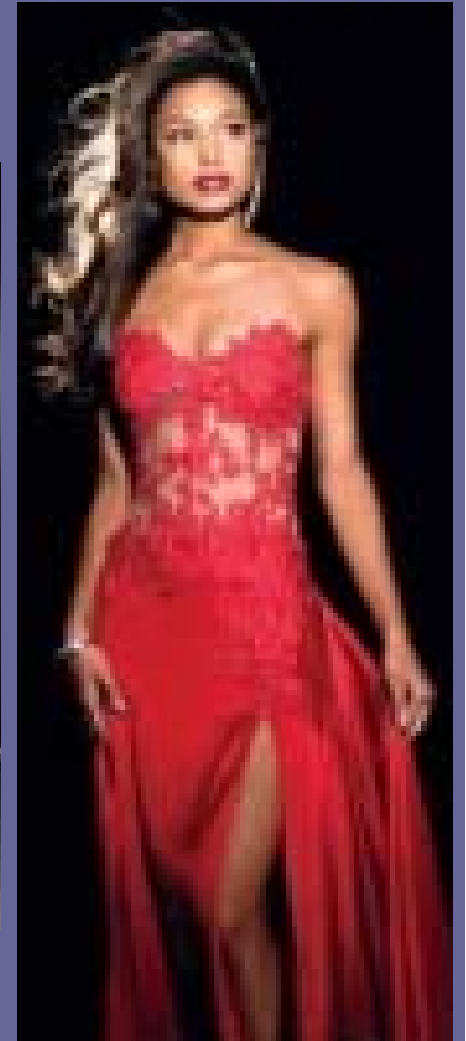
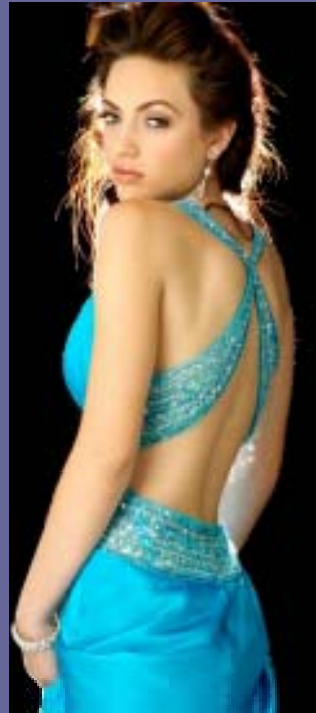
With arms down at your side, if flesh touches flesh in the midriff section the dress is inappropriate.

This dress meets dress code.



Midriff section

# UNACCEPTABLE DRESSES



#4

Dresses may not have a slit that exceeds mid-thigh. This is fingertip length.

This dress meets dress code.



# UNACCEPTABLE DRESSES





# Pictures

Dress for pictures taken at the dance must also meet dress code. You may not wear an inappropriate dress to take pictures and then change into one that does meet code for the dance.

While we will be reasonable in our interpretation of these guidelines, we want you to know that you will not be allowed into the dance if you are dressed inappropriately.

Most importantly, this dress code does not limit your ability to show your style and uniqueness.



There are many beautiful and stylish dresses that do meet dress code.



8125

